

LESSON 3: MOSQUITO CLASSIFICATION

Grouping of animals: All animals on Earth have something in common with each other. For example, you and a mosquito are both **animals**, and belong to the Kingdom **Animalia**. But obviously we do not have everything in common with a mosquito, or we'd be mosquitoes. Scientists group organisms based on things that are the same. This type of grouping is called "**Classification**".

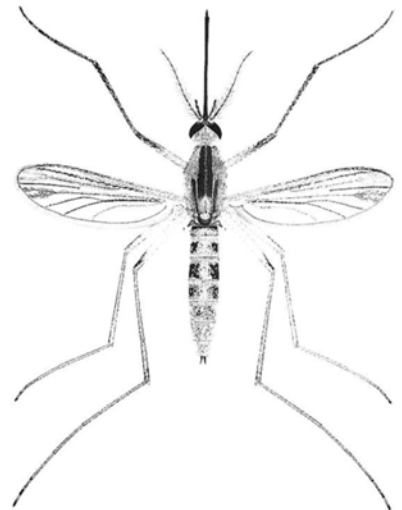
	YOU AND ME	TIGER MOSQUITO
KINGDOM	Animalia	Animalia
PHYLUM	Vertebrata	Arthropoda
CLASS	Mammalia	Insecta
ORDER	Primates	Diptera
FAMILY	Hominidae	Culicidae
GENUS	<i>Homo</i>	<i>Aedes</i>
SPECIES	<i>sapiens</i>	<i>albopictus</i>

Classification of mosquitoes: If the animals below are both mosquitoes, then they should have some things in common.? Lets find out by classifying the two animals based on their similarities. (*Hint: Do you remember from Lesson 1 the different parts of a mosquito?*)



What similarities in appearance do you see?

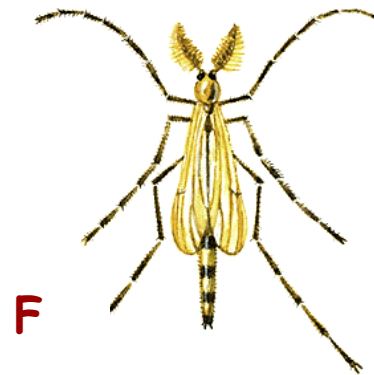
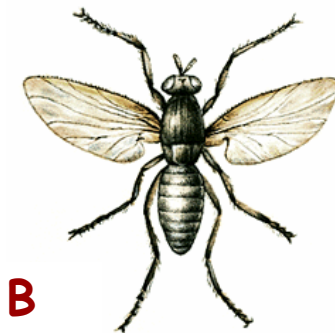
Are these both mosquitoes?



Congratulations! You just classified mosquitoes, as scientists have done for several centuries. Not all mosquitoes are the same! In fact, there are over 3200 species in the world! And each species might prefer to bite a different animal. Some bite birds, some bite frogs, and some bite people.

A case of mistaken identity:

The detective is looking for the mosquito that bit his dog Rufus. Help him find the mosquito by filling in the chart below. Remember, mosquitoes have 2 wings, a proboscis, 6 legs, and 3 body regions (head, thorax, abdomen). Good Luck!



	A	B	C	D	E	F	Mosquito
Proboscis	No				Yes		Yes
Number of legs				6			6
Number of wings		2			4		2

Which animal above is the mosquito?